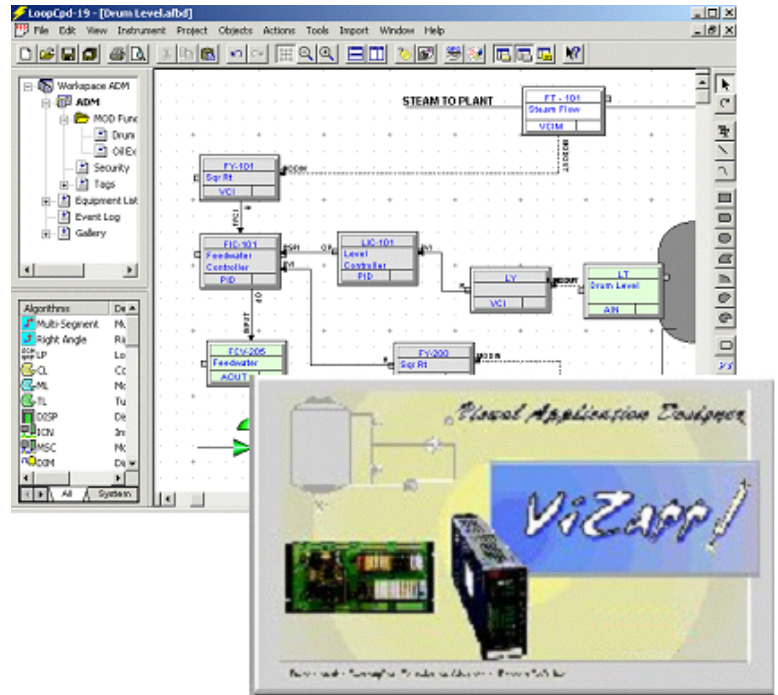


## ViZapp™ Visual Application Designer

### Configuration Software for MOD 30ML and MODCELL

#### Visual Application Designer

- Windows 2000 Pro, XP Pro (32-bit) or Vista Business (32-bit) Operating Environments
- Graphic-Based, Efficient Engineering Tool with Logically Structured, Integrated Sequence, Logic and Continuous Control
- On-Line Debug and Loop Tuning
- Dynamic Displays with Process Symbols and Trend Windows for Easier Debug and Commissioning
- Automatic Population of OPC Server Tag Database
- On-Screen Documentation of Blocks, Connections and User Notes
- Complete Database Documentation in Tabular and Graphic Format
- OPC Servers Provides Modbus or ICN Communications to Any OPC Client Software.

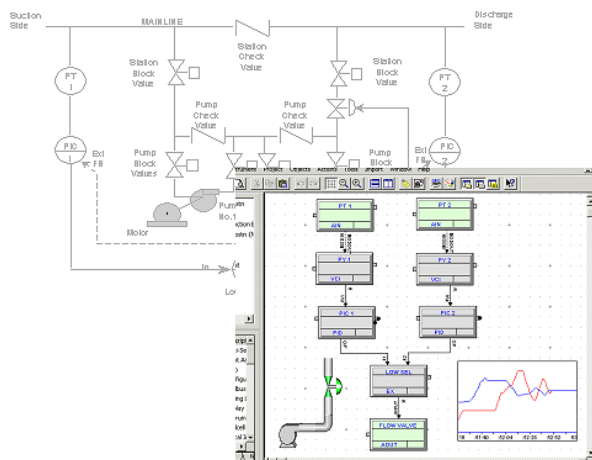


**Visual Application Designer Software Offers a Complete Graphics-Based Configuration, Debug and Commissioning Package for MODCELL Multiloop Processors and MOD 30ML Multiloop Controllers.**

## Visual Application Designer (ViZapp)

The Visual Application Designer software provides a Windows-based environment for creating, editing, downloading, documenting and debugging MOD30ML and MODCELL Multiloop Processor databases. The graphical, function block configuration environment makes it easy to relate the process flow to the configuration. It provides automatic, on-screen documentation of the configuration, including signal source and destination, and "Smart" connections automatically snap to the correct block inputs. On-line, context-sensitive help is available for each block and function.

Live debug and runtime facilities allow on-line verification of the database and process logic, and trend windows simplify loop tuning at commissioning time. There is also a set of drawing tools that can be used to construct runtime displays or place dynamic process symbols next to the algorithm blocks in the configuration for easier debugging, without using a separate HMI package. A Smart Symbols gallery contains a library of standard configurations and static and dynamic process symbols. The user can create additional libraries with application-specific compounds and symbols.



Automatic report generation includes tabular reports containing all blocks in the system, their internal parameters, and all connections, as well as graphical reports showing the database diagram exactly as it is drawn. Once the database has been defined and saved, it is downloaded to individual MODCELL Multiloop Processors or MOD 30ML Multiloop Controllers using either the Extended Modbus or ICN OPC Server.

ViZapp may be ordered with either an Extended Modbus or ICN OPC server, or both. A network version of ViZapp is also available without an OPC Server. This allows configuration, debug, and download over a network to instruments connected to another node, where the OPC server is resident.

## OPC Servers

These servers provide a communication interface between standard OPC clients and the control hardware. With a true OPC client, such as Genesis32, the tags are then read directly without having to re-enter them in the HMI database. The servers have been tested for operation under Windows 2000 Pro, XP Pro (32-bit) and Vista Business (32-bit). They are available as an integral part of ViZapp, or they can be ordered separately as a stand-alone package for use with additional nodes on a network, with other standard Modbus devices such as Commander recorders and controllers, or MOD30 instruments. Both servers directly support MOD30ML and Modcell MultiLoop IEEE floating point, improving resolution and eliminating the need for scaling in the host. The servers also have the ability to import interface files created by the MOD30ML and Modcell MultiLoop instrument configuration software, automatically and effortlessly creating the server's tag database.

OPC Servers are also available separately. See S-CS/MOD-OPC.

## Extended Modbus OPC Server

The Extended Modbus OPC Server provides an enhanced communication interface for MOD30ML controllers, Modcell MultiLoop Processors. It also supports Standard Modbus RTU devices, such as the Commander Series of controllers and recorders.

## ICN OPC Server

The ICN OPC Server provides a communication interface for MOD30ML controllers, Modcell MultiLoop Processors, and MOD30 series instruments through an Instrument Communication Network Link.

## Extended Support Services (ESS)

Each Visual Application Designer and OPC package includes 30 days of technical support from date of the first support request call, and update protection for 30 days from date of the order.

The Extended Support Service option provides additional priority technical support and automatic issue of new ViZapp or OPC Server software releases for a period of twelve months from the date of the order.

## MINIMUM SYSTEM REQUIREMENTS

### Windows 2000 Pro (Minimum OS)

- Windows 2000 Pro with Service Pack 4
- 1 GHz processor
- 1 GB RAM
- 200MB free hard disk space
- CD-ROM Drive for installation
- Video 1024 x 768 16-bit Color
- One Free Parallel or USB Port

### COMMUNICATION REQUIREMENTS

Visual Application Designer communicates with MOD30ML or MODCELL Multiloop Processor via a serial connection, over either an RS-232, RS-422 or an RS-485 interface, using one of the OPC servers. ViZapp development packages include a communications cable for the front port of the MOD30ML, which may also be ordered separately. Downloads must be at 9600 baud or higher.

### COPY PROTECTION

A hardware copy protection key is required for execution is provided with each package. ViZapp is available with either a parallel port or USB style key, specified in the model number.

**ORDERING INFORMATION**

**NOTES:**

1. The following End-User information must be supplied for each package:
  - Company Name
  - Complete Address
  - Contact Name
  - Telephone Number
  - Fax Number
2. When ordering an Update, Upgrade or ESS, serial number from original ViZapp must be supplied on order.

	VIZAPP	DEV		
	06	07-09	10	11 12
<b>Base Configuration Software</b>	VIZAPP			
<b>Communications Interface</b>				
Deluxe - ICN and XModbus OPC Servers <sup>1</sup>		DLX		
ICN OPC Server <sup>1</sup>		ICN		
Extended Modbus OPC Server <sup>1</sup>		XMB		
Network (No OPC Server included) <sup>2</sup>		NET		
<b>Functionality</b>				
Development		DEV		
<b>Software Key Type</b>				
None (for adding to existing MicroMod key, e.g. Micro-PWC)			000	
Parallel Port			PAR	
USB (Universal Serial Port)			USB	
<b>Extended Support Services (ESS)</b>				
None				000
One Year Technical Support & Version Updates				ESS

<sup>1</sup>Includes custom downloading cable for MOD 30ML. MODCELL uses standard 4-wire cable.

<sup>2</sup>For remote PC connected to another PC which has full ViZapp installed

**DOCUMENTATION and ACCESSORIES:**

<i>Note: Each ViZapp package includes electronic documentation on the CD</i>	
Modcell MultiLoop Processor User's Guide (printed)	98280-417
MOD30ML User's Guide (printed)	98280-418
Modcell & MOD30ML User's Guide (printed)	98280-419
Extra MOD30ML Download Cable	109S1854
<i>For connection to front jack - Not for use on NEMA4 style controller</i>	

**VIZAPP UPGRADES and VERSION UPDATES:**

	VIZAPP				
	06	07-09	10	11	12
<b>ViZapp Upgrade from 2006S Application Builder or Single-Server Version of ViZapp to Deluxe Version</b>	VIZAPP				
<b>Communications Interface</b> Deluxe - ICN and XModbus OPC Servers ICN OPC Server Extended Modbus OPC Server	DLX ICN XMB				
<b>Functionality</b> Development Upgrade from 2006S Application Builder Development Upgrade from ViZapp			UGA UPV		
<b>Software Key Type</b> None (add-on to existing MicroMod key e.g. Micro-PWC) - <i>UPV option only</i> Parallel Port - <i>with UGA option only</i> USB (Universal Serial Port) - <i>with UGA option only</i>				000 PAR USB	
<b>Extended Support Services</b> None One Year Technical Support & Version Updates					000 ESS

	VIZAPP		UPD	000	
	06	07-09	10	11	12
<b>ViZapp Version Update</b>	VIZAPP				
<b>Communications Interface</b> Deluxe - ICN and XModbus OPC Servers ICN OPC Server Extended Modbus OPC Server Network (No OPC Server)	DLX ICN XMB NET				
<b>Functionality</b> Version Update			UPD		
Reserved Unused Characters				000	
<b>Extended Support Services</b> None (one-time update) One Year Technical Support & Version Updates					000 ESS

	VIZAPP	000	REN	000	ESS
	06	07-09	10	11	12
<b>Extended Support Services (ESS) Renewal</b> One Additional Year Technical Support & Version Updates	VIZAPP	000	REN	000	ESS

NOTES

---

[www.micromodautomation.com](http://www.micromodautomation.com)

The Company's policy is one of continuous product improvement  
and the right is reserved to modify the information contained  
herein without notice.

Printed in USA (05.12.04)

© MicroMod Automation, Inc. 2004

Revised: July 2008



**MicroMod Automation, Inc.**  
75 Town Centre Dr.  
Rochester, NY 14623 USA  
Tel: (585) 2321-9200  
Fax: (585) 321-9291  
Email: [sales@micromod.com](mailto:sales@micromod.com)

S-MOD-ViZapp